

# 1977 Ford Econoline Vans





# Econoline Vans for '77.

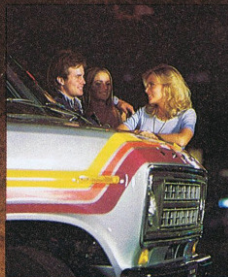
Whatever type of van you're looking for, Ford's got the one that fits your needs, your lifestyle and your wallet. They're all built Ford Tough with separate body/frame construction and rugged Twin-I-Beam front suspension. And there's a big choice of options ranging from swiveling Captain's Chairs and special paint schemes to Privacy Glass™.

TM Trademark applied for.



## Weekend fun, weekday work.

Ford Econoline Vans are a great maneuver on the beach, expressway or city streets. Your choice of hinged double doors or sliding side door. Shown with optional wheels (check your Ford or Mercury Dealer for availability), tires, mirrors, roof rack and special paint.



**Fun to be around and in.** Ford's Econoline is just naturally the center of attention with the special "trick" additions of your choice. And inside there's lots of living space to add your great ideas to ours.



## Factory-built luxury!

Cruising Van interior comes fully carpeted and insulated. There are also Captain's Chairs, storage compartments and more. Cruising Wagons have Sports instrument package and carpeted quarter panels.



## Two much! New Ford Cruising Wagon or Van.

They come already customized with just about every trick in the book. Inside and out—these wheels are ready to roll. Paint stripes, porthole windows, roof luggage rack and much more are standard on both. In fact, they're the industry's first factory-built completely customized wagon and van. Wagon shown with optional tires.

Certain vehicles, both here and on front cover, are shown with custom features added by their owners.



# For all Vankind.

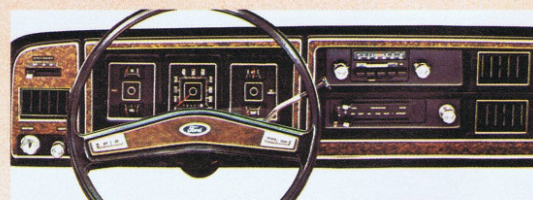
**Look into the Ford Econoline.** You'll find outstanding comfort, convenience, quiet and luxury. See how comfortable the standard full-foam contoured bucket seat is, or try the plush optional Captain's Chair that swivels for you. And the "designed for vankind" Econoline provides three levels of luxury to choose from.



## Chateau Van.

Exterior distinctions include: a bright grille, chromed bumpers, bright 5" x 8" mirrors, and lower bodyside and rear moldings (138" wb. only). Selected options shown are: Special Tu-Tone, mag-style wheel covers, whitewall tires and radio.

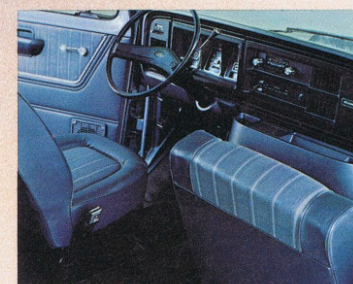
**Chateau interior** features (in addition to or in place of Custom): comfortable super-soft vinyl seat trim in jade, blue or tan • cut-pile carpeting in front • padded front door trim panel with carpeted lower panel • courtesy light switches for all doors.



**Inviting to drive** with luxuriously appointed interior from handsome instrument panel to optional swiveling Captain's Chairs with Argyle cloth inserts or super-soft vinyl.

## Custom Van.

Features (in addition to or in place of Standard): padded full-width instrument panel with simulated woodgrain applique • front side and door trim panels • cigarette lighter • insulated front floor mats • roof rail garnish moldings. Exterior features: bright hub caps • bright taillight bezels • bright vent and rear window frames.



## Standard Van.

Features: full-foam driver's bucket seat • vinyl seat trim in black, blue, jade or tan • 2-speed electric windshield wipers • wiper-arm-mounted washer jets • dome lights • front compartment hardboard headlining and insulated floor mat with scuff plates • electric horn • door checks. Exterior features: argent-painted bumpers and hub caps • bright windshield molding, and painted 5-in. x 8-in. mirrors.



**Illustrations:** Chateau interiors have optional Captain's Chairs with Argyle cloth inserts, air conditioning, AM/FM Stereo, speed control and Cruise-O-Matic. Custom Van has optional mirrors, RH seat and windows. Standard Van has optional AM/FM Stereo, mirrors, RH seat, air conditioning (includes door trim panels), and Cruise-O-Matic.

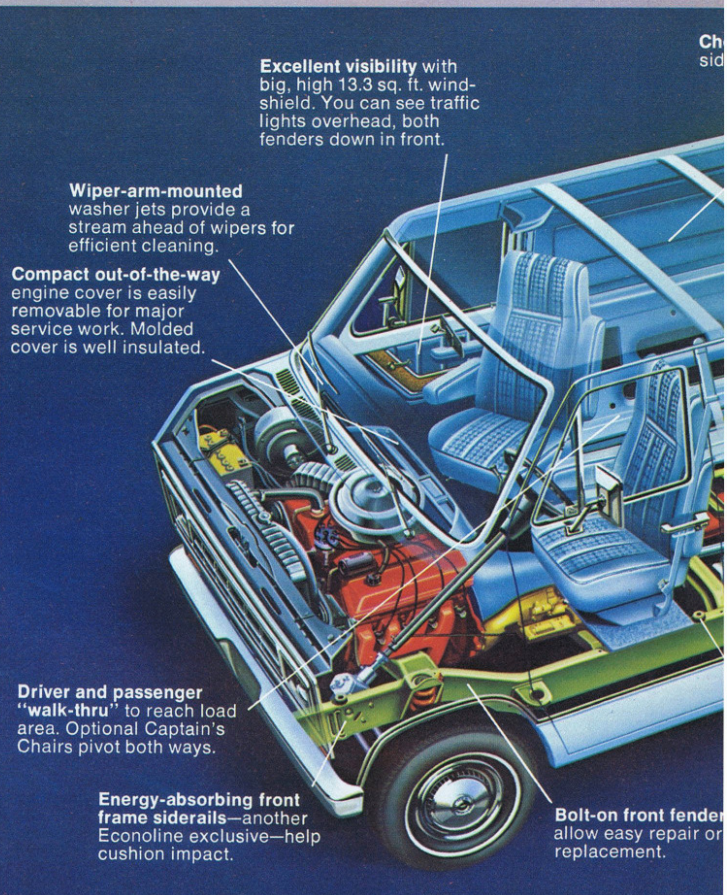


# See why Ford Econolines lead the way!

When Ford redesigned the van it provided major advances in room, comfort, durability and all-around usefulness. The engine and front axle were moved forward—out of your way. Both driver and passenger have more roomy comfort. Front door openings are big. So it's easy to step in or out, and there's space to move from the driver's seat to the load area. You can see for yourself the host of advanced-design features shown on the cutaway at right.



**Insulation package** includes neoprene-coated fiberglass insulation on bodysides plus double door, roof and floor insulation, and wood rub rails are included to protect side insulation. Available on 138-in. wb. cargo vans only, this optional package is included with air conditioning (138-in. wb. only).



**Excellent visibility** with big, high 13.3 sq. ft. windshield. You can see traffic lights overhead, both fenders down in front.

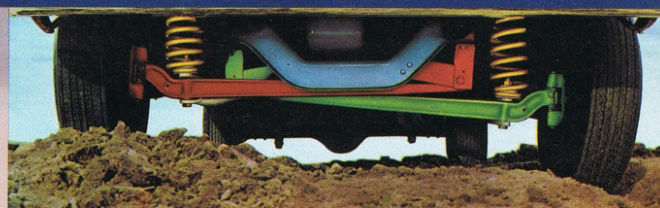
**Wiper-arm-mounted** washer jets provide a stream ahead of wipers for efficient cleaning.

**Compact out-of-the-way** engine cover is easily removable for major service work. Molded cover is well insulated.

**Driver and passenger "walk-thru"** to reach load area. Optional Captain's Chairs pivot both ways.

**Energy-absorbing front frame siderails**—another Econoline exclusive—help cushion impact.

**Bolt-on front fender** allow easy repair or replacement.



**Twin-I-Beam front suspension**—still a Ford exclusive—gives you the strength of two forged-steel I-Beam axles, and coil springs for a smooth ride. Excellent handling and road stability.

**Choice of hinged or sliding** side cargo doors.

**Wide rear doors** have the added convenience of "slam shut" closing action.

**Optional 15 Imp. Gal. auxiliary** fuel tank provides total capacity of up to 35.4 Imp. Gal.

**Antirust galvanizing.** 38 underbody components, ones subject to corrosion, are galvanized.

**Deep-dip electrocoat primer.** The entire body\* is fully immersed in primer, and a high-voltage charge draws primer and binds it to the metal.

\*Except PDV cargo body.

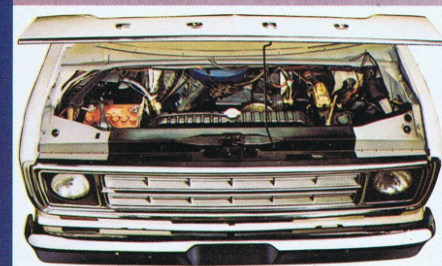
**Sturdy body-on-frame construction.** Ladder-type frame has deep siderails.

**Rubber body mounts** are designed to isolate the body, driver and load from the frame.

**Engine choice.** The standard 300 Six has new durability features for '77. High-efficiency optional 351 and 460 V-8's have been specially strengthened for demanding truck service. All engines feature new DuraSpark solid state ignition.

## ENGINE SPECIFICATIONS

	300 Six	351 V-8	460 V-8
Displacement	300 cu. in.	351 cu. in.	460 cu. in.
Bore & Stroke (in.)	4.00 x 3.98	4.00 x 3.50	4.36 x 3.85



## Easy-access service center.

Econoline's hood and engine-forward design allow convenient routine service from the front. Now 28 key maintenance items can be reached from outside, under the hood.



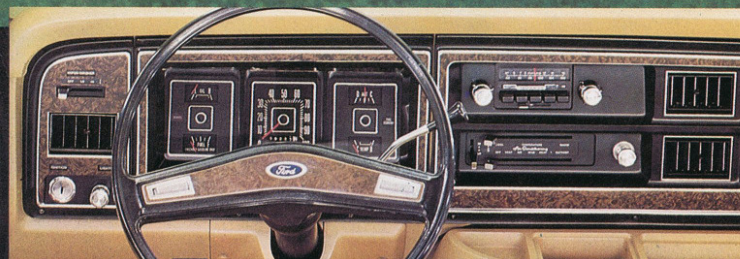


# Out front in options, too!

For more work, more pleasure and more trade-in value, Ford offers a wide choice of options to make your driving easier and more pleasant . . . your van more functional for work, more fun for your personal use. In addition to all of the options illustrated, there is a check list of more options at right.



**Mag-style wheel covers** add a sporty look to 15-in. wheels. Sport tires with raised white letters are also available.



**SelectShift Cruise-O-Matic** transmission allows fully automatic or manual shifting. **Air conditioning** for the front compartment only is an integral instrument panel unit.

**Power steering** for nimble parking and maneuvering ease. **High-capacity air conditioning** combines instrument panel unit with auxiliary designed into the left sidewall (shown below).



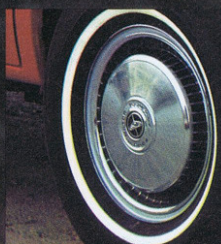
**Speed control** maintains preset speed above 30 mph. Convenient controls on both sides of steering wheel allows easy thumb operation. (Requires V-8.)



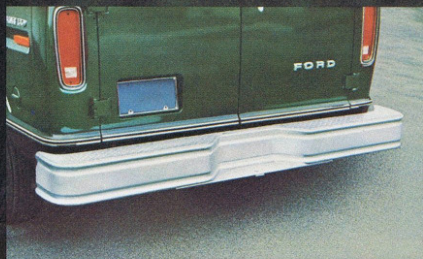
**Entertainment Center** includes AM/FM stereo radio with tape deck. Or choose AM/FM stereo, AM/FM monaural or AM radio.



**Auxiliary hot water heater** mounted in left sidewall has five directional vents. Also available with air conditioning.



**Full wheel covers** are dressy additions to your van.



**Rear step bumper** is reinforced with center plate and drilled for a trailer hitch ball. See your Ford or Mercury Dealer for availability.



**Flip-open windows** are available in cargo and rear doors. Privacy Glass shown.

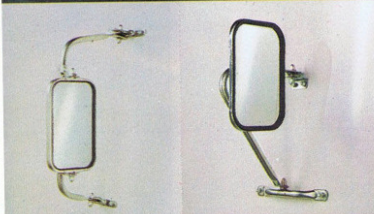


**Captain's Chair** swivels and has convenient fold-down armrests. Comfortable super-soft vinyl or Argyle cloth inserts (Chateau). Available LH or LH and RH.



**Privacy Glass™** lets you see out, but makes it hard to see in. This darkened glass gives you more privacy and helps cut sun heat (includes regular tinted glass in windshield and front doors).

TM trademark applied for.



**Western Swing-Lok** bright mirrors. Left and right, 5" x 9".

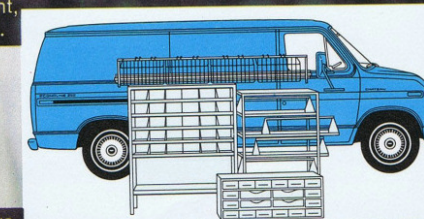
**Low-Mount Swing-Lok** painted mirrors. Left and right, 6 1/2" x 9 1/2".



**Low-Mount Swing-Lok** bright mirrors. Left and right, 8 1/4" x 5 1/4".



**Bright mirrors**, non-telescopic. Left and right 5" x 8" (standard Chateau).

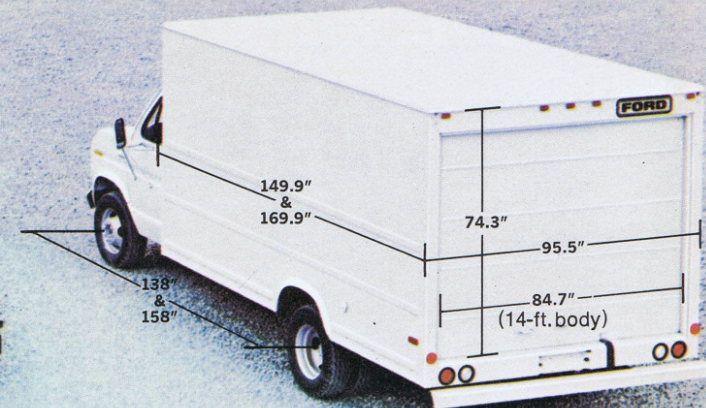
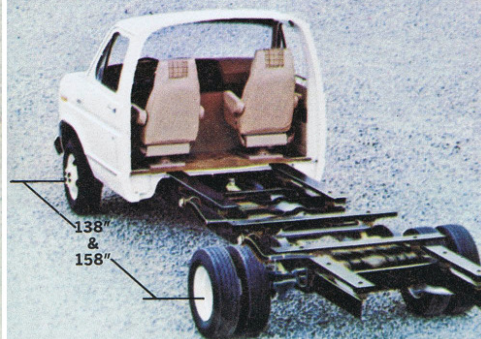


**Job-engineered interior packages**, such as racks, bins and shelf units, can be ordered for many trades from local suppliers.

- **Auxiliary battery** — 81 amp-hr.
- **Auxiliary fuel tank** — 15 imp. Gal. (138" wb. only). Includes electric selector valve.
- **Locking gas cap** — dual tanks include matching key locks.
- **Chromed bumpers** — (std. on Chateau).
- **Convenience Group** — includes courtesy light switches for all doors, 12" day/night mirror and intermittent windshield wipers.
- **Courtesy light switches for all doors** (std. on Chateau).
- **Inside door handle** and lock for RH rear door.
- **Door positioner** (two-stage) for all hinged double doors.
- **Sliding RH side door** (in place of hinged).
- **Engine block heater** — single 600 watt with Six, dual (1,200 watt) with V-8's.
- **Northland Special** — includes engine block heater (above), 50% antifreeze, 77 amp-hr battery, 60 amp. alternator and high output heater.
- **Full-length insulated floor covering** (for 138" wb. only). Carpeting with Chateau.
- **Full-length hardboard headlining** with moldings.
- **High output heater.**
- **Auxiliary hot water heater** — includes LH sidewall unit with five directional vents.
- **Bright hub caps** for Std. Van.
- **Instrument panel padding** — full width for Std. Van.
- **Insulation Package** (included with air conditioning — 138" wb. only).
- **Protection Group** — includes front and sliding door stepwell pads (std. Chateau), front door edge guards and front bumper guards (require chromed bumper).
- **Spare tire and wheel** (Std. E-100).
- **Spare tire cover** — color-keyed vinyl.
- **Spare tire lock.**
- **Stabilizer bar** — front for E-250 and E-350 (Std. E-250 PDV).
- **Trailer Towing Packages** — Light-, Heavy- and Extra-Heavy-Duty for trailers to 10,000 lb.
- **Bright window moldings** (for Std. Van only).
- **Passenger seat** — adjustable or flip-fold is available with standard driver's seat.



All you need to know are your load and weight requirements. The table below offers a quick guide to help you select the right van for your job. Read the columns from left to right to see which Econoline series and GVW package matches your particular needs. Additional specs are shown at the far right.



EQUIPMENT	E-100	E-150	E-250	E-350
Maximum GVWR (lb.)	5750	6150	8300 (8400 C, 7700 PDV)	9850 (10,500 PDV, 11,000 C)
Axle, Front: Rating (lb.)	2950	3200	4000	4200
Axle, Rear: Rating (lb.)	2750	3600	5300	7400
Brakes: Power	Std.*	Std.	Std.	Std.
Clutch: Dia. (in.)— Area (in.)	11— 123.7	11— 123.7	11— 123.7	11— 123.7
Electrical: Battery (amp-hr)	41	41	41	41
Optional Battery (amp-hr)	77, 81 (aux.)	77, 81 (aux.)	77, 81 (aux.)	77, 81 (aux.)
Alternator (amp.)	40	40	40	40
Optional Alternator (amp.)	60 or 90†	60 or 90†	60 or 90†	60 or 90†
Engine: Displacement	300 Six	300 Six	300 Six	300 Six
Optional	351 V-8	351 V-8	351 V-8, 460 V-8	351 V-8, 460 V-8
Shock Absorbers	Front & Rear	Front & Rear	Front & Rear	HD Front & Rear
Optional	HD	HD	HD	—
Springs Front: Coil, Computer Selected Min. Rating @ Ground (lb.)	1285	1360	1475 (1625 C)	1550 (1625 C, 1475 PDV)
Optional	HD Coil	HD Coil	HD Coil	HD Coil
Rear: Rating @ Ground (lb.)	1425	1875	2105 (3205 PDV, 2750 C)	2780 (3300 PDV)
Optional	1630, 1875	1940	2400, 2755, 3005 (3235 C)	3235 (3715 C & PDV)
Steering: Optional	Integral Power	Integral Power	Integral Power	Integral Power
Transmission	3-Spd. Sync.	3-Spd. Sync.	3-Spd. Sync.	3-Spd. Sync.
Optional	Cruise-O-Matic	Cruise-O-Matic	Cruise-O-Matic	Cruise-O-Matic
Wheels: Type— Rim Size	(5) 5-Hole— 5.5K	(4) 5-Hole— 5.5K	(4) 8-Hole— 6.0 (6.75 C, PDV)	(4) 8-Hole— 6.75; (6) 6.0 PDV
Tires: Tubeless■	F78-15B PT	H78-15D PT	8.00 x 16.5D TT‡	9.50 x 16.5D TT▲
Optional	Optional tires—including RADIALS—in sizes to match GVWR requirements. Dual rear tires are offered on F-350 Cutaway and Parcel Delivery Vans. Use adequate tires for loads and type of service. Consult your Ford or Mercury Dealer.			

\*With 5750 lb. GVWR only. †90 amp. N.A. w/300 Six. ‡8.75x16.5E C, PDV. \*8.00x16.5D PDV (dual rear).  
C=Cutaway Chassis, PDV=Parcel Delivery Van, PT=Passenger Type, TT=Truck Type  
\*Spare tire included with E-100 Series only.



# Econoline Van Colors

1. Wimbledon White. 2. Candyapple Red. 3. Brook Blue Metallic. 4. Light Blue. 5. Silver Metallic. 6. Light Jade. 7. Dark Brown Metallic. 8. Indio Tan. 9. Tangerine. 10. Midnight Blue Metallic. 11. Raven Black. 12. Chrome Yellow. 13. Dark Jade Metallic. 14. New Jade Glow (14) and Cinnamon Glow (15) are optional. Five Tu-Tone paint schemes are available.

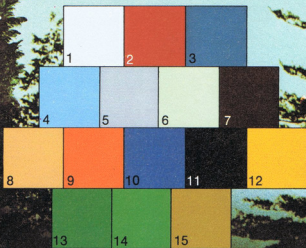
**A. Special Tu-Tone** (138-in. wb. only): accent color is applied between the drip rail and the upper bodyside moldings and below lower bodyside molding. Includes moldings.

**B. Center Accent Tu-Tone**: accent color is applied between the drip rail and upper bodyside moldings. Includes moldings.

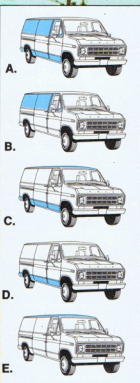
**C. Combination Tu-Tone** (138-in. wb. only): Regular and Deluxe options combined.

**D. Deluxe Tu-Tone** (138-in. wb. only): the accent color is applied below the lower bodyside and rear molding. Side and rear moldings are included.

**E. Regular Tu-Tone**: the accent color is applied to the roof.



Printed colors shown may vary from actual paints.



**Window Vans** have glass all around. Display Vans include glass in right side and rear doors. Shown with optional mirrors and whitewall tires.

**Parcel Delivery Van** Designed to take on big jobs with 12- or 14-ft. body. Single or dual rear wheels, GVWR's to 10,500 lb. Shown with optional mirrors.



**Motorhomes deserve** the new-design cutaway chassis—Ford! Sturdy, separate body/frame for strength, smooth going and durability. GVWR's to 11,000 lb.

Specifications, descriptions and illustrative material contained herein were as accurate as known at the time this publication was approved for printing. Ford of Canada reserves the right to discontinue models or options at any time or change specifications, equipment or design without notice and without incurring obligation. Truck body installations and modifications are the responsibility of the body manufacturer. Owners should assure themselves of the load and handling capabilities of their vehicle when selecting a camper or contemplating custom add-ons and modifications. Some of the vehicle colors and paint combinations illustrated are special order options only. All options, accessories and whitewall tires illustrated or referred to as optional or available in this publication are at extra cost. Some options are required in combination with other options. For the price of the model with the equipment you desire or verification of specifications contained herein, see your Ford or Mercury Dealer.

## FORD ECONOLINE VANS

