

FULL-SIZE PICKUP



C H E V Y T R U C K S 1 9 8 7

FULL-SIZE PICKUP

1987

When it comes to full-size trucks, Chevy and value are practically synonymous. That's because every truck is a hardworking combination of rugged engineering, comfort, year-in year-out performance and responsive driving ease.

MODEL AND PAYLOAD CHOICES. Full-size Chevy Pickups are available in an unbeaten lineup of models with a variety of payloads.

■ Choose from a total of more than 40 models—gas and diesel; 2WD (R-designation) or 4x4 (V-designation), in 10, 20 and 30 Series.

■ With Fleetside or Stepside boxes, Crew Cab/Bonus Cab option, even a dual-rear-wheel Big Dooley (30 Series only) for those with serious trucking specifications.

And for 1987 there's big news under the hood.

ELECTRONIC FUEL INJECTION STANDARD. Every gasoline engine is now electronically fuel injected for easier starts and smooth performance. A computer constantly adjusts for changing altitude and weather conditions and actually fine-tunes the engine as you drive.

POWER CHOICES. A variety of engine choices ensures that there's a powerplant to match your trucking specifications.

■ The Vortec V6 engine with EFI, standard in 10 and 20 Series under 8,600 lbs. GVWR, is one of the most powerful standard engines you can get in a half-ton pickup.

■ For tough power that works, the big 5.7 Liter V8 with EFI is now available in all 10 and 20 Series Chevy Pickups.

■ The 7.4 Liter V8 with EFI is optional in 30 Series Chevys, brawny, big and tough.

■ Most full-size Chevy trucks are available as diesel models* powered by a 6.2 Liter diesel.

TRANSMISSIONS.

■ A 4-speed manual floor-mounted transmission is standard with all gas and diesel models. (Except the 2WD 10 Series, which gets a column-mounted 3-speed manual in the gas model.)

■ Automatic transmissions are optional on all full-size Chevy Pickups.

When you choose your Chevy Pickup, choose carefully. After all, the two of you are going to be together for a long time.

*Except in California on models under 8,500 lbs. GVWR.

Shown left to right: Popular Chevys from the past: 1972, 1956, 1966 pickup trucks.

Center: 1987 R10 Fleetside with optional Silverado trim and optional Exterior Decor Package in Apple Red and Midnight Black. Tires supplied by various manufacturers.

Front Cover: V20 Fleetside with optional Scottsdale trim and optional Special Two-Tone paint in Canyon Copper Metallic and Midnight Black.



CONTENTS

MODELS	Page
2WD	4
Chassis-Cab	4
4x4	6
INTERIORS	8
Custom Deluxe	8
Scottsdale	8
Silverado	8
ENGINEERING	10
ENGINES	10
FEATURES	12
OPTIONS	12
COLOR & PAINT TREATMENTS	14
DIMENSIONS & SPECIFICATIONS	14
ADDITIONAL INFORMATION	15

FULL-SIZE PICKUP 2WD

These are the pickups more Chevy owners buy than any others. With more than 20 2WD models to choose from, you can match a Chevy Pickup exactly to your job needs.

UNBEATEN MODEL CHOICES.

■ 2WD Chevy Pickups (R-des-

ignation) are available in 1/2-, 3/4- and 1-ton (10, 20, 30) Series.

■ GVWs are sufficient for tough jobs. R10: 4,900 lbs. through 6,100 lbs. R20: 6,400 lbs., 7,200 lbs. and 8,600 lbs. R30: 9,000 lbs., 9,600 lbs. and 10,000 lbs. (Big Dooley).

■ Choose Fleetside or Stepside pickup boxes.

■ Crew Cab/Bonus Cab is available on 20 or 30 Series.

■ Or select a full-size Chassis-Cab (available 20 and 30

Series) and attach a variety of optional bodies out back.

GAS OR DIESEL POWER. Most full-size 2WD Chevy Pickups are available as gasoline or diesel models.

■ The Vortec V6 with EFI is standard on 10 or 20 Series pickups up to 7,200 GVW.

■ The 5.7 Liter V8 with EFI is standard on 20 Series trucks with 8,600 GVW and over, and on 30 Series vehicles.

■ Optional V8 engine choices

are detailed on page 11.

■ Diesel muscle is provided by the 6.2 Liter V8.

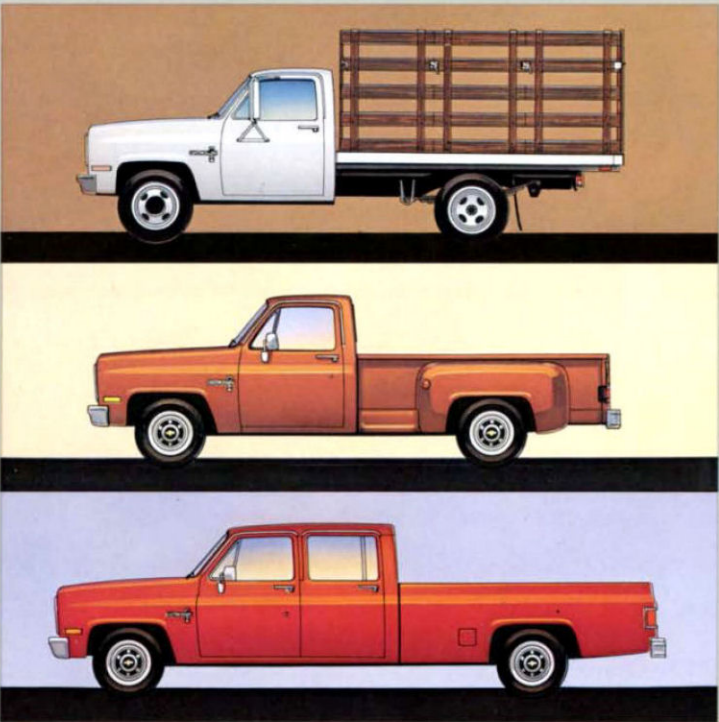
Look over the photos and chart on these pages and those in the back of this brochure. Then talk to your Chevy dealer about the hardworking 2WD Chevy Pickup that's right for you.



THREE 2WD SERIES, GAS OR DIESEL*

	Fleetside	Stepside	Crew Cab	Bonus Cab	Payload Range	Chassis-Cab	Payload Range
R10 (1/2-ton 2WD)	■ ■	■			1014-2572		
R20 (3/4-ton 2WD, w/o C6P)	■				1913-4009		
R20/C6P (HD 3/4-ton 2WD)	■	■	■	■	3307-4304	■ ■ ■ ■	3616-4759
R30 (one-ton 2WD, w/o C7C)	■ ■	■	■ ■	■ ■	3654-5276	■ ■ ■ ■ ■ ■	3654-5734
R30/C7C (HD one-ton 2WD) ♦						■ ■ ■ ■ ■ ■	5342-5736

■ 117.5" WB (6-1/2' Box) ■ 131.5" WB ■ 135.5" WB ■ 159.5" WB ■ 164.5" WB (8' Box)
 ■ Dual Rear Tires Available HD—Heavy Duty *Diesel models under 8,500 lbs. GVWR not available in California. ♦ Diesel models only.



R30 Chassis-Cab Custom Deluxe in Frost White with stake body available as a dealer-installed option.

R20 Stepside Custom Deluxe with long box in Canyon Copper Metallic.

R20 Fleetside Bonus Cab Custom Deluxe in Apple Red.

Chevy R10 Fleetside Custom Deluxe, shown in Doeskin Tan, is an unbeatable work truck value. You get the protection of double-wall construction in critical areas and one of the most powerful standard engines you can get in a half-ton pickup.

FULL-SIZE PICKUP

4X4

When you want to conquer country in a big way, nothing works like a big Chevy 4x4. There are twenty rugged 4x4 models to choose from. Trucks that will make tracks long after lesser pickups have given up and dropped out.

MODEL CHOICES.

■ 4x4 Chevy Pickups (V-designation) are available in 1/2-, 3/4- and 1-ton (10, 20, 30) Series.

■ GVWs are sufficient to scale hills that stretch to the heavens and lug a load of gear besides. V10: 6,100 lbs. V20: 6,600 lbs. and 8,600 lbs. V30: 9,200 lbs. and 10,000 lbs.

■ Choose Fleetside or Stepside pickup boxes.

■ Crew Cab/Bonus Cab or Chassis-Cab models are available on 30 Series trucks.

GAS OR DIESEL POWER. Since most Chevy 4x4 Pickups are available as either gas or diesel models, you can take your pick.

■ The Vortec V6 with EFI is the standard gasoline engine on

V10 Pickups.

■ The beefy gas-powered 5.7 Liter V8 with EFI is standard on V20 and V30 Series trucks.

■ Optional V8 gas power ranges all the way to the 7.4 Liter V8 bruiser available on V30 trucks. (See p. 11 for details.)

■ The 6.2 Liter V8 Diesel is a popular truck diesel, registering millions of owner-driven miles.

4WD YOU CAN COUNT ON.

■ Keeping all that power on the ground is an aggressive 2-speed transfer case and manual locking front hubs.

■ Automatic locking hubs are an option in V10 trucks.

■ Also included on every Chevy 4x4: Front stabilizer bar, two-stage multileaf spring rear suspension, power steering and self-adjusting power front disc/rear drum hydraulic brakes.

What are you waiting for? Jump into your Chevy 4x4 and head out and away.

THREE 4X4 SERIES, GAS OR DIESEL*

	Fleetside	Stepside	Crew Cab	Bonus Cab	Payload Range	Chassis-Cab	Payload Range
V10 (1/2-ton 4WD)	■ ■	■			1420-2069		
V20 (3/4-ton 4WD)	■	■			1819-2226		
V20/C6P (HD 3/4-ton 4WD)	■	■			3599-4063		
V30 (one-ton 4WD)	■ ■		■ ■ ■ ■		3367-4786	■ ■ ■ ■	3789-5241
V30/C7E (HD one-ton 4WD) ♦						■ ■ ■ ■	5373-5773

■ 117.5" WB (6-1/2' Box) ■ 131.5" WB (8' Box) ■ 135.5" WB ■ 159.5" WB

■ 164.5" WB (8' Box) ■ Dual Rear Tires Available

*Diesel models under 8,500 lbs. GVWR not available in California. ♦ Diesel models only.

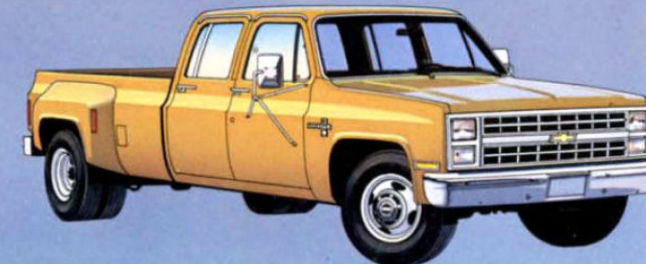
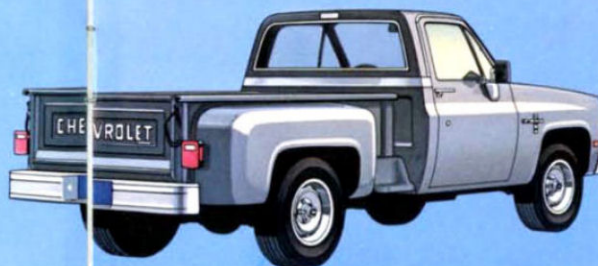
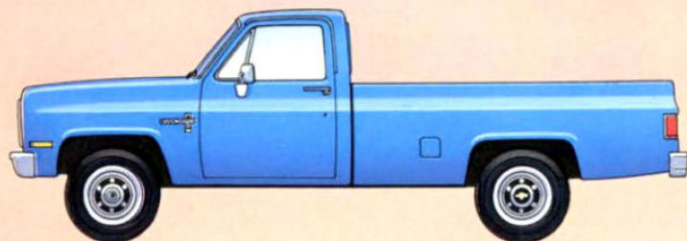


V20 Fleetside with optional Scottsdale trim and optional Deluxe Two-Tone in Midnight Black and Doeskin Tan.

Shown far left: V20 Fleetside Custom Deluxe in Light Blue Metallic.

Shown in center: V10 Stepside Custom Deluxe with short box in Steel Gray Metallic.

Shown at left: V30 Fleetside Big Dooley Crew Cab Custom Deluxe in Nevada Gold Metallic.



FULL-SIZE PICKUP INTERIORS

Nothing says full-size pickup like the roomy cab of a Chevy. To make the most of all the leg, head and hip room and the sit-tall seating position, three trim packages are available.

STANDARD CUSTOM DELUXE.

This base package includes:

- Black rubber floor mats.
- Color-keyed vinyl seats.
- Color-keyed molded door trim panels with armrests.
- Padded instrument panel.

OPTIONAL SCOTTSDALE. Dress up your truck with:

- A choice of Deluxe Cloth or Custom Vinyl upholstery.
- Full headliner.
- Color-keyed floor mats.
- Extra insulation.
- Special exterior features.

OPTIONAL SILVERADO. Welcome to the top-of-the-line. This plush option features all

- Scottsdale items, plus:
- Color-keyed headliner and moldings.
- Color-keyed carpeting.
- Custom steering wheel.
- Full-gage instrumentation.
- Special exterior identification and other luxuries that keep you trucking in style.

FULL-SIZE PICKUP/CHASSIS-CAB SEAT TRIM AVAILABILITY

Seat Type (See Note Below)	Trim Levels		
	Custom Deluxe	Scottsdale	Silverado
Vinyl Bench Seat	■	■†	■
Deluxe Cloth Bench Seat	■*	■	■
Custom Vinyl Bench Seat	■*	■	■
Custom Cloth Bench Seat	■	■†	■

Note: Crew Cab model rear seat matches front seat trim. *Regular Cab only. †Crew Cab only.
 ■—Standard ■—Optional ■—Not Available



Here's full-size Chevy Pickup comfort at its best. Shown above left is the optional Silverado trim in Blue Custom Cloth. Below far left is the optional Scottsdale in Saddle Tan. Below left is the standard Custom Deluxe interior in Saddle Tan.

R (2WD) and V (4x4) Pickups have plenty of room inside for three adults. Shown in the Crew Cab is the standard bench seat in Charcoal vinyl.



URETHANE STONE SHIELDS. In front of rear wheel openings on Fleetside models to help protect finish from stone chips and road debris.

EXTENSIVE CAB WEATHERPROOFING. Butyl rubber around doors and windows plus sealing compounds and rubber gaskets at joints.

EXTENSIVE ANTI-CORROSION PACKAGE. Includes a Zincrometal® hood outer panel and two-sided galvanized steel inner hood and door panels.

DOUBLE-WALL CONSTRUCTION. This construction in doors, front fenders, cab rear upper panel and hood and on Fleetside models in the cargo box sidewalls and tailgate helps keep your Chevy looking good.

6.2 LITER DIESEL. Every Chevy diesel pickup model features the proven 6.2 Liter V8, one of the most popular truck diesels in America. Designed specifically for trucks, this big V8 features a durable steel camshaft, nodular iron crankshaft, cast aluminum pistons and a glow plug starting system for fast cold-engine starts. All backed by a 50,000-mile limited warranty. (Diesel not available in California in trucks under 8,600 lbs. GVWR.) See your dealer for details.

GIRDER BEAM FRONT SUSPENSION. Contoured steel control arms with coiled springs flex independently to help maintain a smooth, steady ride (2WD models only).

RUBBER-BUSHED CAB MOUNTS. To help isolate road noise, reduce vibration, and to help keep you from feeling fatigued behind the wheel.

STRONG STEEL FRAME. A rigid, ladder-type foundation with steel side rails and cross members puts a strong backbone under Chevy Pickups.

HYDRAULIC CLUTCH. Adjusts automatically, provides smooth operation and improved drivability. (Manual transmissions only.)

ALL-SEASON STEEL-BELTED RADIAL TIRES. A premium tire standard on 10 Series. M + S (Mud and Snow)-rated tires qualify as snow tires in those areas that require snow tires.

COUNTER-ANGLED REAR SHOCKS. One slants forward, the other back to help control brake and power hop, especially when the truck's empty.

TWO-STAGE MULTILEAF REAR SUSPENSION. Offers progressive support for heavier loads.

FULL-SIZE PICKUP ENGINEERING

You're looking at some of the reasons why there are so many Chevy trucks on the roads of America. It's tough engineering like this that makes Chevy the rugged full-size pickup built to work hard every day for years.

ELECTRONIC FUEL INJECTION (EFI). There's powerful news underhood in Chevy Pickups: Electronic Fuel Injection for easier starts and increased drivability and reliability. EFI uses a computer to adjust fuel delivery to changing altitude and atmospheric conditions. And EFI is standard across the gasoline engine lineup for 1987.

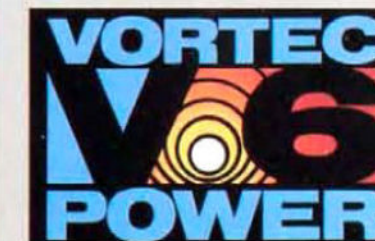
4.3 LITER EFI VORTEC V6. This powerful engine is standard in half-ton Chevy Pickups. Swirl-port cylinder heads help pump out 160 SAE net horsepower and 235 lb.-ft. torque. Standard on 10 and 20 Series under 8,600 lbs. GVWR.

5.0 LITER EFI V8. One of the most popular truck V8s. Now with Vortec-type swirl-port induction and EFI for even more horsepower and torque. Available in 10 and 20 Series under 8,600 lbs. GVWR. 170 SAE net horsepower. 260 lb.-ft. torque.

5.7 LITER EFI V8. 210 horsepower and 300 lb.-ft. torque are now available in all 10 and 20 Series Chevys. (This engine is required in 20 and 30 Series above 8,600 lbs. GVWR.)

7.4 LITER EFI V8. An awesome 7.4 Liter V8 with power and torque few engines can beat: 230 horsepower, 385 lb.-ft. torque. Available in R20, R30, and V30 Series over 8,600 lbs. GVWR.

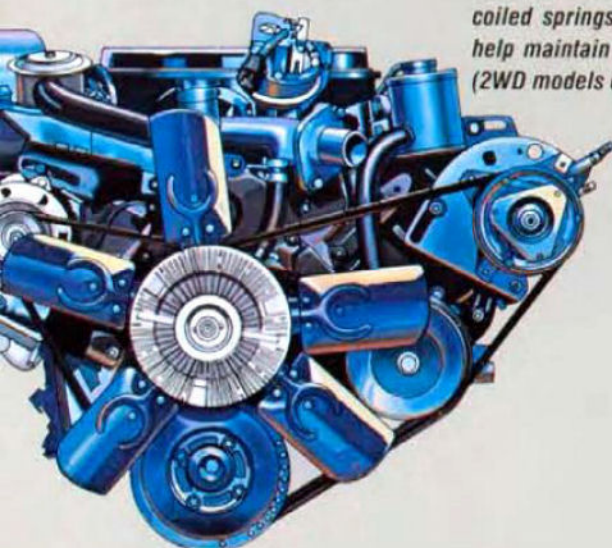
6.2 LITER DIESEL. The longevity and efficiency of diesel power is available in most full-size Chevy Pickups. See the drawing on opposite page for details.



ENGINE SPECIFICATIONS	Displacement—Liter	4.3 Liter EFI V6	5.0 Liter EFI V8	5.7 Liter EFI V8	7.4 Liter EFI V8	6.2 Liter V8 (Diesel)
	Engine Ordering Code	LB4	LO3 (A)	LO5	Not Offered	LH6
All Series 10 models and Series 20 models without Heavy-Duty Chassis (C6P).	Bore & Stroke (in.)	4.0 x 3.48	3.74 x 3.48	4.0 x 3.48		3.98 x 3.82
	Compression Ratio	9.3 to 1	9.3 to 1	9.3 to 1		21.3 to 1
	SAE Net Horsepower @ RPM	160 @ 4000	170 @ 4000	210 @ 4000		130 @ 3600
	SAE Net Torque (lb.-ft.) @ RPM	235 @ 2400	260 @ 2400	300 @ 2800		240 @ 2000
Series 20 models with Heavy-Duty Chassis (C6P) and all Series 30 models.	Engine Ordering Code	Not Offered	Not Offered	LO5	L19	LL4
	Bore & Stroke (in.)			4.0 x 3.48	4.3 x 4.0	3.98 x 3.82
	Compression Ratio			8.6 to 1	7.9 to 1	21.3 to 1
	SAE Net Horsepower @ RPM			185 @ 4000	230 @ 3600	148 @ 3600
	SAE Net Torque (lb.-ft.) @ RPM			295 @ 2400	385 @ 1600	246 @ 2000

(A) Produced in U.S. or Canada.

A WORD ABOUT ENGINES. Chevrolet trucks are equipped with engines produced at facilities operated by GM car and truck groups, subsidiaries or affiliated companies worldwide.



FULL-SIZE PICKUP FEATURES AND OPTIONS

STANDARD FEATURES INTERIOR

- Armrests: RH and LH padded.
- Ashtrays: Instrument panel and rear door panels (Crew/Bonus Cabs only).
- Coat Hooks: RH side (all models) and over rear doors (Crew/Bonus Cab models).
- Door Trim Panels: Color-keyed molded plastic.
- Floor Covering: Black rubber mats.
- Heater and Defogger: Outside-air type.
- Hood Lock Release: Inside-operated.
- Instruments:

- Grille: Molded plastic, painted argent.
- Horn: Single, electric; low-note.
- Hubcaps: Bright metal with black trim.
- Lights: Backup lamps integral with tail lamps, two rectangular headlamps, plus front and rear direction and parking lamps. Front side marker lamps.
- Mirrors: RH and LH chromed, adjustable.
- Tailgate: Removable (Fleetside only) with Chevrolet lettering.
- Tools: Mechanical jack and wheel wrench.
- Wheels: Painted white.
- Windshield Wipers and Washers: Electric, two-speed.

Gages: Speedometer, odometer and fuel.
Switches: Main, for interior, exterior and instrument panel.
On steering column for direction signals, headlamp high/low beam and windshield washer/wiper. Hazard warning, heater fan and ignition with Key-in warning buzzer.
Warning Lights: Generator, oil pressure, engine temperature, safety belt, service/parking brake, direction/hazard signal and high beams.

- Insulation and Sound-Deadening Material: On firewall, under floor mats and between roof panels of regular cab models.
- Lights: Instrument cluster and cab interior.

- Mirror: 10" prismatic.
- Seats: Foam-padded full-width bench seat with vinyl trim. Crew Cabs only: Full-width rear bench seat.

- Safety Belts: All seating positions.
- Steering Wheel and Column: 16" soft black plastic 2-spoke wheel with energy-absorbing column.
- Stowage Box: RH side of instrument panel.
- Sunshades: RH and LH color-keyed-padded.

EXTERIOR

- Bumpers: Front chromed.
- Door: RH and LH, front (all models); RH and LH rear side (Bonus and Crew Cab models only).

Full-size Chevy Pickup can move up to 18,000 lbs. worth of trailer, truck, equipment, cargo and people when properly equipped. The 1987 Chevy Recreation and Trailering Guide, available from your Chevy dealer, lists the required and/or recommended optional equipment to meet your trailering needs.

Your 4x4 Chevy Pickup can clear away mountains of snow when the truck is properly equipped. Snowplow available as a dealer-installed option.



Styled wheels.

Cast aluminum wheels.



Wheel covers.

Rally wheels.



Delco AM/FM stereo radio with cassette deck.

R10 Fleetside with optional Silverado trim in Apple Red. Shown with optional cargo light, sliding rear window, Below Eyeline mirrors, door edge guards, rear step bumper with dealer-installed hitch ball. Tires supplied by various manufacturers.

OPTIONAL EQUIPMENT

In addition to all the standard value built into every full-size Chevy Pickup, you can choose those options that will personalize your rugged Chevy truck.

OPTIONAL ON ALL PICKUP MODELS

- Air Conditioning
- Bumpers: Chromed Front Bumper Guards, Chromed Rear Bumper, Chromed Rear Step Bumper*, Painted Rear Step Bumper
- Cargo Area Lamp
- Cigarette Lighter
- Color-Keyed Floor Mats
- Comfortilt Steering Wheel
- Deluxe Front Appearance Package
- Dome Lamp
- Quartz Electric Clock
- Gages: Voltmeter, Temperature, Oil Pressure
- Halogen Headlamps
- Intermittent Windshield Wipers
- Mirrors: Painted Below Eyeline, Stainless Steel Below Eyeline, Stainless Steel Camper
- Moldings: Body Moldings—Black* or Bright*, Custom Molding Package—Black*, Deluxe Molding Package—Bright*, Door Edge Guards
- Paint Options: Conventional Two-Tone Paint, Deluxe Two-Tone Paint*, Exterior Decor Package*, Special Two-Tone Paint*
- Radios & Accessories, Delco: AM Radio, AM/FM Radio, Windshield Antenna
- Sliding Rear Window
- Spare Tire Carrier—Glide-Out
- Spare Tire Carrier—Side Mounted*
- Tinted Glass.

*Fleetside Pickups only.

OPTIONAL ON ALL MODELS

- Air Cleaner, Precleaner
- Auxiliary Fuel Tank
- Axle, Rear: Locking Differential
- Cold Climate Package
- Electronic Speed Control
- Engine Oil Cooler
- Heavy-Duty Automatic Transmission Cooler

- Heavy-Duty Battery
- Heavy-Duty Radiator.*

*Except diesel models.

Your Chevy dealer has details regarding specific option packages offered for some full-size pickup models. Each grouping includes extra-value

items in addition to specified content. Whether you need a work-ready hauler or a high-comfort cruiser, there's an option package that will help you spec out your Chevy truck.

APPEARANCE AND CONVENIENCE OPTIONS

Options Available on Models as Listed	2-Wheel Drive				4-Wheel Drive				Bonus/Crew Cab		
	R10	R20	R20HD	R30	V10	V20	V20HD	V30	R20	R30	V30
AM/FM Stereo Radio	■	■	■	■	■	■	■	■	■	■	■
AM/FM Stereo Radio w/Cassette Tape	■	■	■	■	■	■	■	■	■	■	■
Operating Convenience Package	■	■	■	■	■	■	■	■	■	■	■
Pickup Box Side Rails	■	■	■	■	■	■	■	■	■	■	■
Power Door Locks	■	■	■	■	■	■	■	■	■	■	■
Power Windows	■	■	■	■	■	■	■	■	■	■	■
Painted West Coast Mirrors					■				■	■	■
Roof Marker Lamps		■	■	■		■	■	■	■	■	■
Wheels, Rally	■					■					
Wheels, Styled	■					■					
Wheel Covers, Bright Metal	■				■	■					■
Wheel Covers, Special (Bright Metal)		■	■	■		■	■	■	■	■	■
Wheels—Cast Aluminum	■					■					

■—Both gasoline and diesel. ■—Standard.

PERFORMANCE AND HEAVY-DUTY OPTIONS

Options Available on Models as Listed	2-Wheel Drive				4-Wheel Drive				Bonus/Crew Cab		
	R10	R20	R20HD	R30	V10	V20	V20HD	V30	R20	R30	V30
Auxiliary Battery											
Brakes, Vacuum Power	■	■	■	■	■	■	■	■	■	■	■
Brakes, Heavy-Duty Power	■	■	■	■	■	■	■	■	■	■	■
Dual Rear Wheels					■				■	■	■
Front Tow Hooks	■	■	■	■	■	■	■	■	■	■	■
Front Quad Shocks					■	■	■	■			
Front Stabilizer Bar	■	■	■	■					■	■	■
Heavy-Duty Front & Rear Shocks	■	■	■	■	■	■	■	■	■	■	■
Heavy-Duty Front Stabilizer Bar		■	■	■	■	■	■	■	■	■	■
Heavy-Duty Front Springs		■	■	■	■	■	■	■			
Rear Springs Extra-Capacity Rear Springs—G51	■	■	■	■					■	■	■
Heavy-Duty Rear Springs—G50	■	■									
Main and Aux. Rear Springs—G60					■				■	■	■
Power Steering					■	■	■	■	■	■	■
Special Camper Chassis Equipment		■	■	■					■	■	■
Special Commercial Chassis Equipment					■						■

■—Gasoline. ■—Both gasoline and diesel. ■—Standard.

FULL-SIZE PICKUP FACTS

1987 FULL-SIZE PICKUP SPECIFICATIONS—GAS

Gasoline		2-Wheel Drive (R)						4-Wheel Drive (V)			
Series		R10	R20	R20 HD (C6P)	R20	R30	R30	V10	V20	V20 HD (C6P)	V30
Cab Type		Conv.	Conv.	Conv.	Bonus/Crew	Conv.	Bonus/Crew	Conv.	Conv.	Conv.	Conv., Bon./Crew
GVWR Range (lb.)		4900/6100	6500/7200	8600	8600	9000/10,000	9000/10,000	6100	6600	8600	9200/10,000
Engine—Liter (cu. in.)		4.3L (262) V6	4.3L (262) V6	5.7L (350) V8	5.7L (350) V8	5.7L (350) V8	5.7L (350) V8	4.3L (262) V6	5.7L (350) V8	5.7L (350) V8	5.7L (350) V8
	Standard	—	—	—	—	—	—	—	—	—	—
	Optional	5.0L (305) V8	5.0L (305) V8	—	—	—	—	5.0L (305) V8	—	—	—
	Optional	—	5.7L (350) V8	7.4L (454) V8	7.4L (454) V8	7.4L (454) V8	7.4L (454) V8	5.7L (350) V8	—	—	7.4L (454) V8
Front Suspension	Type/Springs	Independent/Coil Springs						Hypoid Driving Axle/Leaf Springs			
	Cap. (lb.)	2950	3800	3800	3800	3800	4000	3600	3800	3800	4500
Rear Suspension	Axle Type	Semi-Floating*						Semi-Floating			
	Cap. (lb.)	3750	5700	6000	7500	7500	7500	3750	5700	6000	7500
Brakes	Disc/Drum	Manual	Power	Power	Power	Power	Power	Power	Power	Power	Power
Steering	Standard	Manual	Manual	Manual	Manual	Manual	Manual	Power	Power	Power	Power
	Optional	Power	Power	Power	Power	Power	Power	—	—	—	—
Transmission	Standard	3-Spd. Man.	4-Spd. Man.	4-Spd. Man.	4-Spd. Man.	4-Spd. Man.	4-Spd. Man.	4-Spd. Man.	4-Spd. Man.	4-Spd. Man.	4-Spd. Man.
	Optional	4-Spd. Man.	—	3-Spd. Auto.	3-Spd. Auto.	3-Spd. Auto.	3-Spd. Auto.	4-Spd. Man./O.D.	—	3-Spd. Auto.	3-Spd. Auto.
	Optional	4-Spd. Man./O.D.	4-Spd. Auto./O.D.	4-Spd. Auto./O.D.	—	—	—	4-Spd. Auto./O.D.	4-Spd. Auto./O.D.	4-Spd. Auto./O.D.	—
	Optional	3-Spd. Auto.	—	—	—	—	—	—	—	—	—
	Optional	4-Spd. Auto./O.D.	—	—	—	—	—	—	—	—	—
Transfer Case		—	—	—	—	—	—	—	Conventional NP 208	Conv. NP 205	—
Tire Size		P195/75R-15	LT215/85R-16C	LT235/85R-16 (F/D);(R)E	LT235/85R-16 (F/D);(R)E	LT235/85R-16 (F/D);(R)E	LT235/85R-16 (F/D);(R)E	P235/75R-15	LT215/85R-16C	LT235/85R-16 (F/D);(R)E	LT235/85R-16 (F/D);(R)E
	Standard	—	—	—	—	—	—	—	—	—	—
	Optional	—	—	—	—	—	—	—	—	—	—

*Full floating axle included with 7.4 Liter (454) V8 engine. Tire Load Range—C (6PR), D (8PR), E (10PR).

1987 FULL-SIZE PICKUP SPECIFICATIONS—DIESEL*

Diesel		2-Wheel Drive (R)						4-Wheel Drive (V)			
Series		R10	R20	R20 HD (C6P)	R20	R30	R30	V10	V20	V20 HD (C6P)	V30
Cab Type		Conv.	Conv.	Conv.	Bonus/Crew	Conv.	Bonus/Crew	Conv.	Conv.	Conv.	Conv., Bon./Crew
GVWR Range (lb.)		5200/6100	6400/7200	8600	8600	9000/10,000	9000/10,000	6100	6600	8600	9200/10,000
Engine—Liter (cu. in.)		6.2L (379) V8	6.2L (379) V8	6.2L (379) V8	6.2L (379) V8	6.2L (379) V8	6.2L (379) V8	6.2L (379) V8	6.2L (379) V8	6.2L (379) V8	6.2L (379) V8
	Standard	—	—	—	—	—	—	—	—	—	—
Front Suspension	Type/Springs	Independent/Coil Springs						Hypoid Driving Axle/Leaf Springs			
	Cap. (lb.)	3400	3800	3800	3800	3800	4000	3600	3800	3800	4500
Rear Suspension	Axle Type	Semi-Floating						Semi-Floating			
	Cap. (lb.)	3750	5700	6000	7500	7500	7500	3750	5700	6000	7500
Brakes	Disc/Drum	Power	Power	Power	Power	Power	Power	Power	Power	Power	Power
Steering	Standard	Power	Power	Power	Power	Power	Power	Power	Power	Power	Power
	Optional	4-Spd. Man.	4-Spd. Man.	4-Spd. Man.	4-Spd. Man.	4-Spd. Man.	4-Spd. Man.	4-Spd. Man.	4-Spd. Man.	4-Spd. Man.	4-Spd. Man.
	Optional	4-Spd. Man.	—	3-Spd. Auto.	3-Spd. Auto.	3-Spd. Auto.	3-Spd. Auto.	4-Spd. Man./O.D.	—	3-Spd. Auto.	3-Spd. Auto.
	Optional	4-Spd. Man./O.D.	4-Spd. Auto./O.D.	4-Spd. Auto./O.D.	—	—	—	4-Spd. Auto./O.D.	4-Spd. Auto./O.D.	4-Spd. Auto./O.D.	—
Transfer Case		—	—	—	—	—	—	—	Conventional NP 208	Conv. NP 205	—
Tire Size		P205/75R-15	LT215/85R-16C	LT235/85R-16 (F/D);(R)E	LT235/85R-16 (F/D);(R)E	LT235/85R-16 (F/D);(R)E	LT235/85R-16 (F/D);(R)E	P235/75R-15	LT215/85R-16C	LT235/85R-16 (F/D);(R)E	LT235/85R-16 (F/D);(R)E
	Standard	—	—	—	—	—	—	—	—	—	—
	Optional	—	—	—	—	—	—	—	—	—	—

Tire Load Range—C (6PR), D (8PR), E (10PR). *Diesel models 8500 lbs. GVWR and below not available in California.

TWO-TONE PAINT OPTIONS.



CONVENTIONAL TWO-TONE. (Combination A). Includes Color Code 1 on cab roof and back panel down to the beltline moldings with Color Code 2 applied on the rest of the truck.



SPECIAL TWO-TONE* (Combination B). Includes body side/wheel-opening moldings, bright trim for standard marker lights and taillights. Color Code 1 is applied to cab roof, hood and upper body above the body side moldings, Color Code 2 is below.



DELUXE TWO-TONE* (Combination C). Includes Special Two-Tone trim items with Color Code 1 on cab roof and back panel and below the side moldings. Color Code 2 is applied between belt and side moldings.



EXTERIOR DECOR PACKAGE. Includes body side moldings, dual-tone body side and rear decal striping keyed to exterior color, with Color Code 1 above the striping and below the moldings and Color Code 2 in between.

SPECIAL BIG DOOLEY TWO-TONE.† Includes dual-tone body side and rear tape decal striping above the crease line with Color Code 1 above the decal and Color Code 2 below.

*Fleetside single rear-wheel models only.

†Fleetside dual rear-wheel models only.

INTERIOR AND EXTERIOR COLOR AVAILABILITY CHART

Trim Level—Seat Type		INTERIOR COLORS				
		Blue	Burgundy	Charcoal	Mahogany	Saddle Tan
CUSTOM DELUXE—Vinyl Bench Seat						
Deluxe Cloth Bench Seat						
Custom Vinyl Bench Seat						
SCOTTSDALE—Deluxe Cloth Bench Seat						
Custom Vinyl Bench Seat						
SILVERADO—Custom Vinyl Bench Seat						
Custom Cloth Bench Seat						
EXTERIOR COLORS		Two-Tone Available	Color Code 1	Color Code 2	RECOMMENDED INTERIOR TRIM COLOR	
BLACK, MIDNIGHT						
Copper, Canyon (Metallic)		A, C only				
Gold, Nevada (Metallic)		A, C only				
Gray, Steel (Metallic)		All				
Tan, Doeskin		All				
White, Frost		All				
BLUE, LIGHT (Metallic)						
Blue, Midnight		B only				
Gray, Steel (Metallic)		B only				
White, Frost		B only				
BLUE, MIDNIGHT						
Blue, Light (Metallic)		A, C only				
Gray, Steel (Metallic)		All				
White, Frost		All				
BRONZE, INDIAN (Metallic)						
Tan, Doeskin		B only				
White, Frost		B only				
COPPER, CANYON (Metallic)						
Black, Midnight		B only				
Tan, Doeskin		B only				
White, Frost		B only				
GOLD NEVADA (Metallic)						
Black, Midnight		B only				
Tan, Doeskin		B only				
White, Frost		B only				
GRAY, STEEL (Metallic)						
Black, Midnight		All				
Blue, Light (Metallic)		A, C only				
Blue, Midnight		All				
Red, Apple		All				
White, Frost		B only				
RED, APPLE						
Gray, Steel (Metallic)		All				
Tan, Doeskin		B only				
White, Frost		All				
TAN, DOESKIN						
Black, Midnight		All				
Bronze, Indian (Metallic)		A, C only				
Copper, Canyon (Metallic)		A, C only				
Gold, Nevada (Metallic)		A, C only				
Red, Apple		A, C only				
White, Frost		All				
WHITE, FROST						
Black, Midnight		All				
Blue, Light (Metallic)		A, C only				
Blue, Midnight		All				
Bronze, Indian (Metallic)		A, C only				
Copper, Canyon (Metallic)		A, C only				
Gold, Nevada (Metallic)		A, C only				
Gray, Steel (Metallic)		A, C only				
Red, Apple		All				
Tan, Doeskin		All				
EXTERIOR DECOR PACKAGES						
Black, Midnight/Gray, Steel (Metallic)						
Black, Midnight/Tan, Doeskin						
Blue, Light (Metallic)/Blue, Midnight						
Blue, Light (Metallic)/Gray, Steel (Metallic)						
Blue, Light (Metallic)/White, Frost						
Blue, Midnight/Gray, Steel (Metallic)						
Bronze, Indian (Metallic)/Tan, Doeskin						
Copper, Canyon (Metallic)/Tan, Doeskin						
Copper, Canyon (Metallic)/White, Frost						
Red, Apple/Black, Midnight						
Red, Apple/Tan, Doeskin						
Red, Apple/White, Frost						
Gray, Steel (Metallic)/Black, Midnight						
Gray, Steel (Metallic)/Blue, Midnight						
Gray, Steel (Metallic)/Red, Apple						
Tan, Doeskin/Black, Midnight						
Tan, Doeskin/Red, Apple						

IMPORTANT: A WORD ABOUT THIS CATALOG. We have tried to make this catalog as comprehensive and factual as possible and we hope you find it helpful. However, since the time of printing, some of the information you will find here may have been updated. Also, some of the equipment shown or described throughout this catalog is available as factory-installed options, dealer accessories and special equipment from various independent suppliers at extra cost. Your dealer has details, and, before ordering, you should ask him to bring you up to date. The right is reserved to make changes at any time, without notice, in prices, colors, materials, equipment, specifications and models. Check with your Chevrolet dealer for complete information.

A WORD ABOUT ASSEMBLY, COMPONENTS AND OPTIONAL EQUIPMENT IN THESE CHEVROLET PRODUCTS. The full-size Chevy Pickups described in this catalog (Series R10, R20 and R30; V10, V20 and V30) are assembled at facilities operated by General Motors or GM of Canada. These vehicles incorporate thousands of different components produced by car and truck groups and various component divisions of GM and by various suppliers worldwide to General Motors. From time to time during the manufacturing process, it may be necessary, in order to meet public demand for particular vehicles or equipment, or to meet federally mandated emissions, safety and fuel economy requirements, or for other reasons, to produce Chevrolet products with different components or differently sourced components than initially scheduled. All such components have been approved for use in Chevrolet products and will provide the quality performance associated with the Chevrolet name.

THE GM PROTECTION PLAN. An option that offers service protection in addition to that provided by GM's new-vehicle limited warranty. Available only in the U.S. and Canada for the 1987 model year. Ask your dealer about this option.

AS PART OF THE 1987 CHEVROLET NEW-VEHICLE LIMITED WARRANTY, your Chevy truck includes three-year perforation-from-corrosion coverage. Exhaust system components not included. See your Chevy dealer for details and other limitations.

TO ADVISE YOU IF AN OPTION YOU ORDERED IS UNAVAILABLE. We suggest that you verify that your vehicle includes the optional equipment you ordered or, if there are changes, that they are acceptable to you.

These vehicles are also available under the GMC nameplate GMC Pickup Series R1500, R2500 and R3500; V1500, V2500 and V3500.

FOR INFORMATION ON ANY NEW CHEVY TRUCK. See your Chevy dealer for a complete selection of 1987 Chevy truck catalogs. They cover ■ Chevy S-10 Blazer ■ full-size 4WD Blazer ■ Chevy S-10 Pickup ■ Suburban ■ El Camino ■ Chevy Van/Sportvan ■ Astro Passenger and Astro Cargo Van ■ all Medium-Duty Chevrolets and the ■ Chevy Recreation and Trailering Guide.

LET'S GET IT TOGETHER... BUCKLE UP.

AT YOUR CHEVY DEALER'S, FINANCING or leasing your new full-size pickup can be as easy as saying GMAC.

Shown on back cover: V20 Fleetside Pickup Custom Deluxe in Apple Red.



NOTHING WORKS LIKE A CHEVY TRUCK